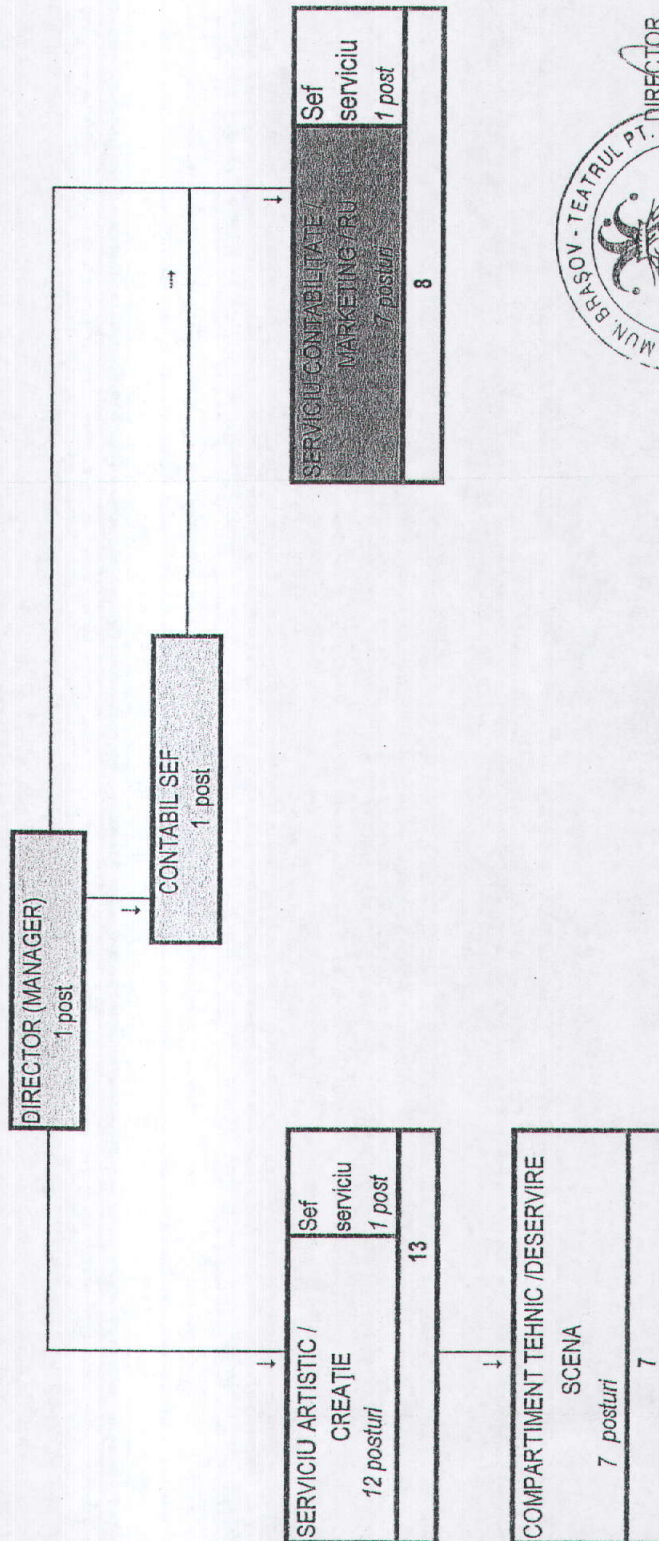


# TEATRUL PENTRU COPII ARLECHINO BRASOV

ANEXA 1 la 998/2013

## ORGANIGRAMA TEATRULUI PENTRU COPII "ARLECHINO" BRASOV





**STAT DE FUNCTII**  
al Teatrului pentru copii "Arlechino" Brasov

Nr. crt.	Compartiment/ Funcția	Nivel studii	Grad/ treapta	cls	Gra- date	Numar posturi		
						Total	Ocup.	Vacan.
0	1	2	3	4		5	6	7
<b>I.COMPARTIMENT MANAGEMENT</b>								
1	Director (Manager)	S	II	76		1	1	
2	Contabil sef	S	II	74		1	1	
	<b>TOTAL I:</b>					2	2	
<b>II. SERVICIU ARTISTIC/CREATIE</b>								
1	Sef serviciu artistic	S	II	73		1	0	1
2	Actor	S	I	65	2	1	1	
3	Actor manuiitor papusi marionete	S	IA	70	5	4	4	
4	Actor manuiitor papusi marionete	S	IA	69	4	1	1	
5	Actor manuiitor papusi marionete	S	I	65	2	1	1	
6	Actor manuiitor papusi marionete	S	I	67	3	1	1	
7	Actor manuiitor papusi marionete	S	I	69	5	1	0	1
8	Actor manuiitor papusi	S	II	62	2	1	1	
9	Actor manuiitor papusi	M	II	50	3	1	1	
10	Sculptor papusi	S	II	52	3	1	1	
	<b>TOTAL II:</b>					13	11	2
<b>III.COMPARTIMENT TEHNIC /DESERVIRE SCENA</b>								
1	Operator sunet	M	I	47	5	1	1	
2	Operator lumini	M	I	47	5	1	1	
3	Regizor tehnic	M	I	55	4	1	1	
	artist plastic	M	I	52	2	0.5	0.5	
4	muncitori activ.specif.inst.cultura	G	I	47	5	1	1	
5	muncitori activ.specif.inst.cultura (manipulant decor)	G	I	21	4	1	0	1
5	muncitori activ.specif.inst.cultura	G	I	46	4	1.5	1.5	
	<b>TOTAL III:</b>					7	6	1
<b>IV. SERVICIUL CONTABILITATE/ MARKETING/R.U</b>								
1	Sef serviciu marketing/JU-RU/administrativ	S	II	73		1	1	
2	Consilier PR si marketing	S	II	43	2	1	1	
3	Referent specialitate (administrativ-achizitii)	S	II	47	5	1	1	
4	Secretar literar	S	II	50	1	1	1	
5	Referent (artistic impresar)	M	IA	31	5	1	1	
6	Referent specialitate RU	S	I	57	5	1	1	
7	supraveghetor sala, contr.bil.	G	I	29	5	1	1	
8	Sofer	G	I	24	5	1	1	
	<b>TOTAL IIII:</b>					8	8	0
	<b>TOTAL GENERAL:</b>					30	27	3
	TOTAL POSTURI OCUPATE			27				
	TOTAL POSTURI VACANTE			3				
	TOTAL POSTURI SUSPENDATE			0				
	TOTAL POSTURI :			30				



SEF SERVICIU  
ec. VALERIA GAVA

Intocmit  
Maria Grigorescu